

THE MILL @ LEWINSHOPE



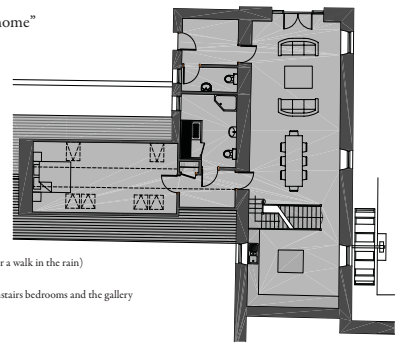
"Words can't express how wonderful, relaxing and special this week has been. We feel enriched in every way for staying here and believe everyone should have the 'Mill' experience"
Michael and Suzanne McIester

"It oozes comfort, creative designing, care to detail and has a lovely atmosphere. A real vision! John Kuskin and William Morris would have approved of all the skills and crafts involved!"
D & Nigel Hayward

"It was amazing staying in such a unique house"
Mackinnon Family

"The house is beautiful, we want to take it home"
The Robb Party

"The Mill has been perfect - it has a special grace and serenity that nurtures the soul!"
True and Donald



STUART DAVIDSON ARCHITECTURE

DERELICTION



TRANSFORMATION



FUNCTION

Made for wet weather
Good plumbing, all five showers can be used simultaneously (after a walk in the rain)
Utility room doubles as a drying room
Disabled access. Disabled guests can use all parts except the downstairs bedrooms and the gallery

TIMBER

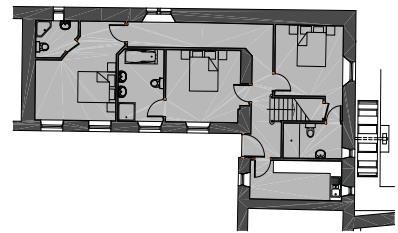
Original stone and timber retained where possible
Timber from Johnny's business used for structural purposes, finishing and furniture
Aarris (3/4 round) for robustness and to maintain traditional feel

MATERIAL RECYCLING

Massive bench (bootroom) from old Douglas fir lintol
Bootroom basin splashback from old stone water trough
Slates to cover small straight fittings
Door latches

SUSTAINABILITY

Woodchip boiler
Underfloor heating for low level comfortable heat
Excellent insulation
Open fire
Well designed lighting



CONTEMPORARY & COMFORTABLE

The overall design aim was to produce an attractive, modern and comfortable holiday house. In order to respect neighbouring buildings, we wanted to make best use of the existing mill building, and to give it a distinct and natural feel. We used specially selected Borders hardwoods from trees cut down by Johnny (who runs a tree surgery business from Lewinshope). We were not afraid of introducing modern elements, and believed that by using timber in a contemporary way we were able to complement the traditional buildings rather than work against them.

LOCAL HARDWOODS

Our use of various hardwoods also allowed us to theme the different bedrooms and their bathrooms. Hardwood is excellent for holiday properties, as it is easy to maintain and clean, and if it is mistreated will develop character rather than simply looking tarnished or damaged. Using locally sourced timber and local tradesmen also made the project more flexible and rewarding. Minimal extra openings were made, and the large garage barn door opening allowed a massive window without spoiling the character of the building.

WATER WHEEL REPAIRED

Outside, much rubble was cleared and the water wheel repaired, so the original form and function of the building can be seen again. The flat area at the barn entrance has been extended to make a sheltered and private sitting area with views both up and down the valley. A generous parking area has been made, partly concealed by being set into the bank, and close to the building entrance. Shrubs have been planted around the Mill and along the new entrance, which avoids the farm buildings. The re-formed mill pond and stream further add to the sense of place.

As the project progressed quite a number of matters came up which called for design changes, some of them minor, some not so minor. Without the flexible and pragmatic approach of SBC Building Control officers such a sensitive restoration of an old building would not have been possible.

TRANSFORMATION

We hope that our visitors will leave the Mill, at least unconsciously, with a better appreciation of how wood can be used in a contemporary building context, and a feeling that old farm buildings can make clean, comfortable and stylish places to live.